



301 Abbeydale Road, Sheffield, S7 1FJ

Saxton Mee

301 Abbeydale Road

Guide Price

£260,000

GUIDE PRICE: £260,000-£270,000

A Fantastic Bright & Spacious Five-Bedroom Terrace in Popular Abbeydale – Offered with No Onward Chain

Welcome to this superb five-bedroom mid-terrace home, beautifully presented and generously proportioned throughout. Situated in the ever-popular residential area of Abbeydale, the property benefits from excellent local amenities, regular bus links, and easy access to nearby green spaces—perfect for families and professionals alike.

Stepping inside, a welcoming hallway leads to a bright and airy lounge featuring a charming bay window and high ceilings that enhance the sense of space. The separate dining room provides an ideal setting for family meals or entertaining, while the well-appointed kitchen, WC, and utility area complete the ground floor layout.

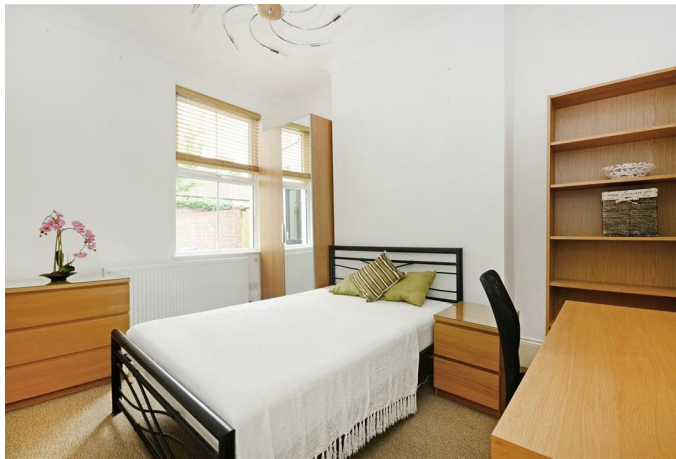
To the first floor, you will find three well-proportioned bedrooms, including the main bedroom with a beautiful bay window, a modern family bathroom, and an additional shower room for convenience. The second floor offers two further double bedrooms and an extra shower room, making this home perfectly suited to larger families or those needing flexible workspace.

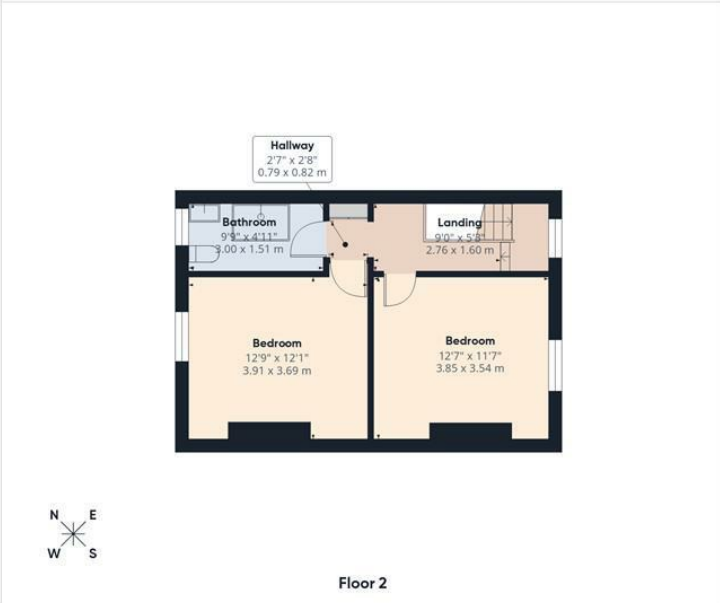
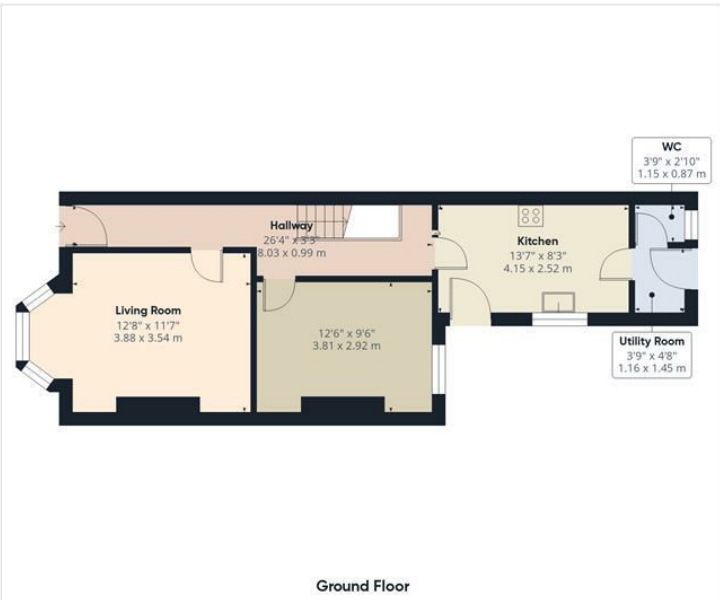
Outside, the property enjoys a low-maintenance rear garden, providing a private space to relax.

With its bright accommodation, spacious layout, period features, and no onward chain, this impressive Abbeydale property is ready to welcome its next owners. Early viewing is highly recommended



- Fantastic bright and spacious five-bedroom terraced property
- Located in the popular residential area of Abbeydale, close to amenities, bus links and green spaces
- High ceilings and generous room sizes throughout
- Lounge with attractive bay window plus separate dining room
- Kitchen, WC and utility area on the ground floor
- First floor features three bedrooms, main bathroom, shower room and main bedroom with bay window
- Second floor offers two additional double bedrooms and a further shower room
- Low-maintenance rear garden
- Offered for sale with no onward chain





Approximate total area^m
1512 ft²
140.4 m²

(1) Excluding balconies and terraces

Calculations reference the RICS IPMS 3C standard. Measurements are approximate and not to scale. This floor plan is intended for illustration only.

GIRAFFE360

While we endeavour to make our sales particulars fair, accurate and reliable, they are only a general guide to the property and, accordingly, if there is any point, which is of particular importance to you, please contact the relevant office. The Agents have not tested any apparatus, equipment, fittings or services and so cannot verify they are in working order. The buyer is advised to obtain verification. Please note all the measurement details are approximate and should not be relied upon as exact. All plans, floor plans and maps are for guidance purposes only and are not to scale. Under no circumstances should they be relied upon as exact or for use in planning carpets and other such fixtures, fittings or furnishings. YOUR HOME IS AT RISK IF YOU DO NOT KEEP UP REPAYMENTS ON A MORTGAGE OR OTHER LOAN SECURED ON IT. 'A Life Assurance policy may be requested.' 'Written Quotations of credit terms available on request.'

Banner Cross
T: 0114 268 3241
E: bannercross@saxtonmee.co.uk
www.saxtonmee.co.uk

Hathersage
T: 01433 650009
E: hathersage@saxtonmee.co.uk

Bakewell
T: 01629 815307
E: bakewell@saxtonmee.co.uk

Matlock
T: 01629 828250
E: matlock@saxtonmee.co.uk

